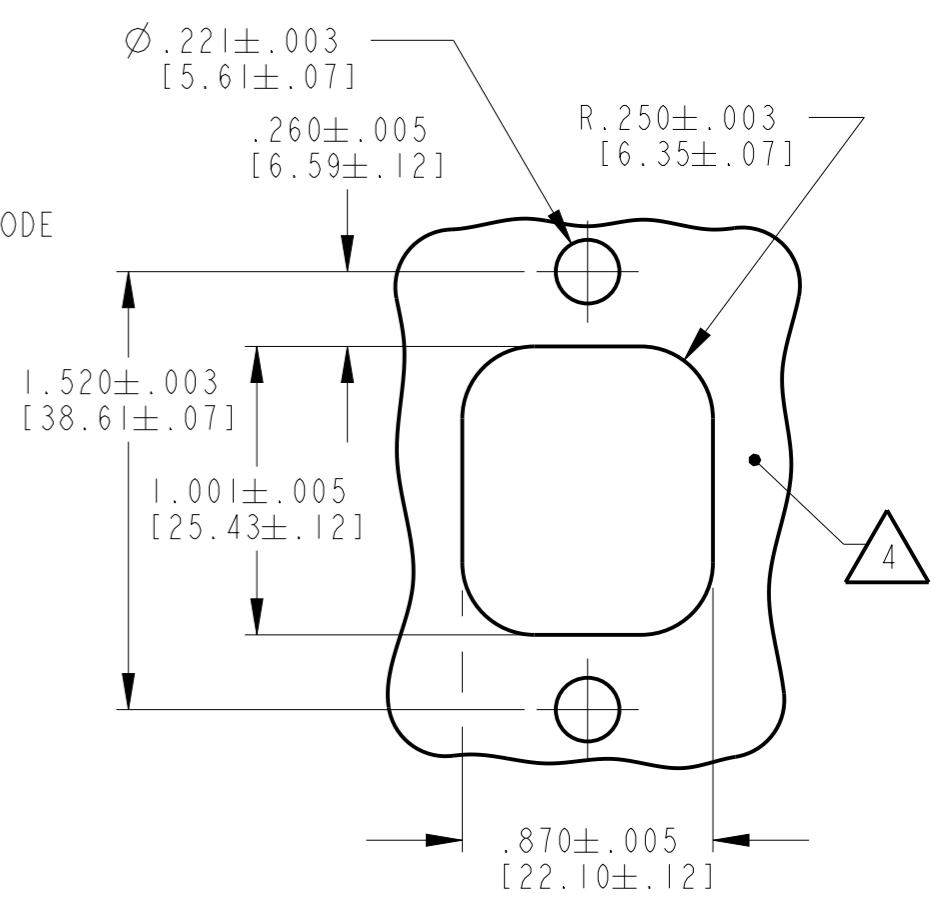
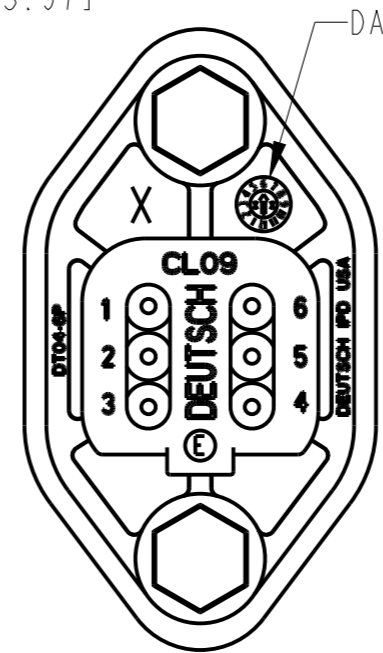
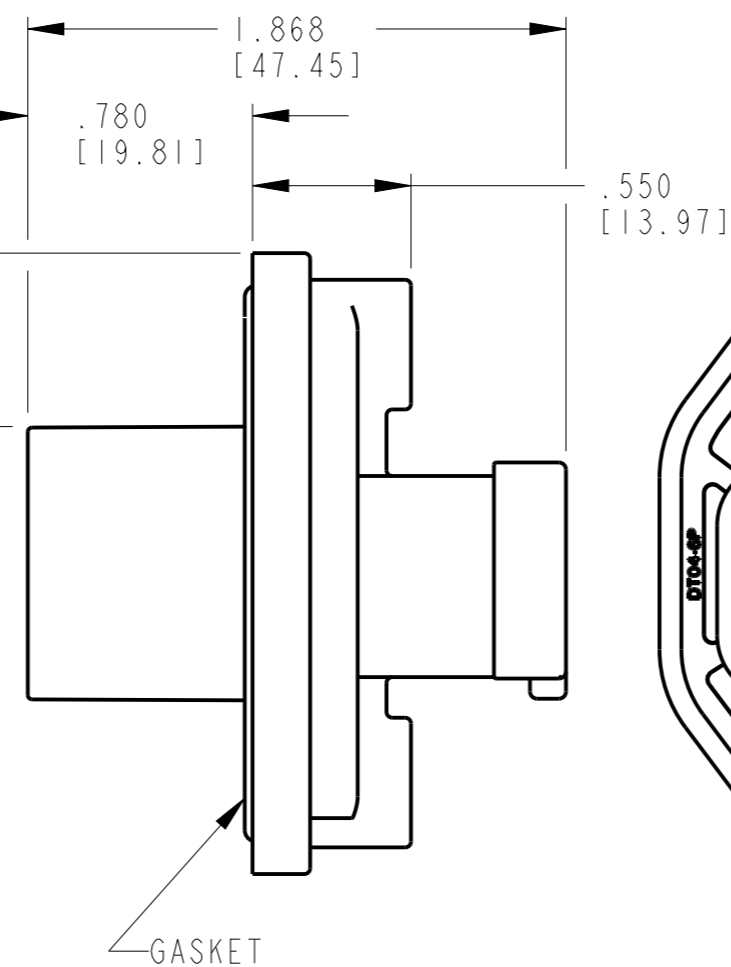
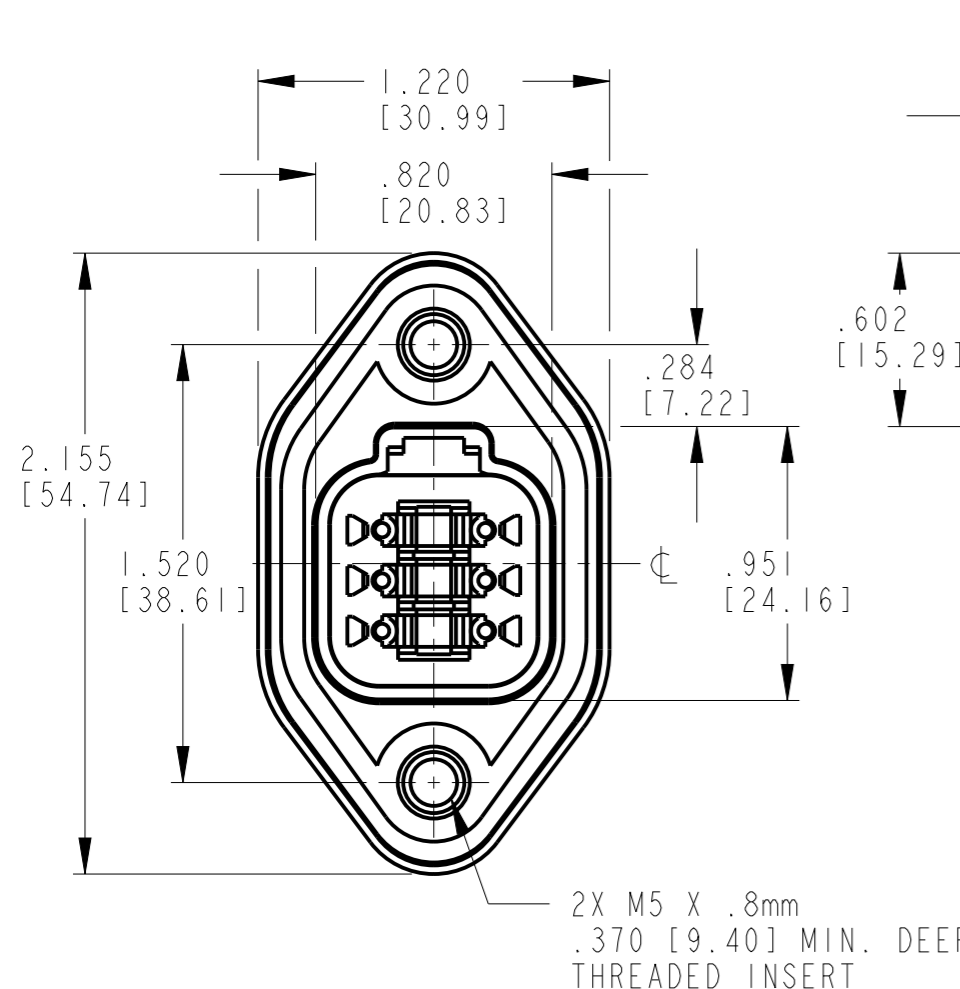


THIS DRAWING IS UNPUBLISHED. RELEASED FOR PUBLICATION 2014  
 © COPYRIGHT 2014 BY TE CONNECTIVITY ALL RIGHTS RESERVED.

LOC	DIST	REVISIONS			
P	LTR	DESCRIPTION	DATE	DWN	APVD
	NC	NEW RELEASE PER E.O. PI8957	9-1-05	TY	RDR
	A	REVISED PER E.O. PI9429	12-11-06	TY	RDR
	B	REVISED PER E.O. P20013	9-26-08	TY	DM
	BI	REVISED PER ECO-14-005851	4-17-14	JA	DM



RECOMMENDED MOUNTING DETAIL

CONTACT SIZE	MIN. INSUL O.D.	MAX. INSUL O.D.	WIRE RANGE [mm <sup>2</sup> ] REF ONLY
16	.053 [1.34]	.120 [3.04]	14-20 AWG [2.0-0.5]

5. RECOMMENDED TORQUE VALUE FOR SCREW: 19±2 IN-LB [2.15±.23 N-m].

4 INTERNAL SEALING SURFACE FINISH TO BE  $\nabla_{32}$  OR BETTER  $\square .005 [ .13 ]$ .

3. CONNECTOR MATERIAL IS BLACK PLASTIC; SEAL AND GASKET ARE RUBBER; INSERT IS STAINLESS STEEL.

2. THIS RECEPTACLE MATES WITH DT06-6S-\*\*\*\* PLUG AND UTILIZES W6P WEDGE LOCK. (\*\*\*\* = ALL MODIFICATIONS) CONSULT FACTORY FOR MODIFICATIONS.

1 FOR CONTACTS AND WIRE PERFORMANCE AND APPLICATION CHARACTERSTICS, SEE ENVELOPE DRAWINGS 0425-015-0000 AND 0425-017-0000.

NOTES:

THIS DRAWING IS A CONTROLLED DOCUMENT.		DWN 07APR2014 JAIME C. APOSTOL		TE Connectivity	
DIMENSIONS: INCHES [mm]		CHK 17APR2014 RUSSELL MESSENGER			
TOLERANCES UNLESS OTHERWISE SPECIFIED:		APVD 17APR2014 DAVID MEYER		NAME 6 WAY RECEPTACLE WITH REDUCED WIRE SEAL DT SERIES	
0 PLC ± 1 PLC ± 2 PLC ± 3 PLC ±.025 [.64] 4 PLC ± ANGLES ±0°30'0"		PRODUCT SPEC		SIZE A3	
MATERIAL		APPLICATION SPEC		CAGE CODE 4AFU8	
FINISH		WEIGHT 25.75g		DRAWING NO. DT04-6P-CL09	
		CUSTOMER DRAWING		RESTRICTED TO -	
		SCALE		SHEET OF REV BI	